

Vulnerability Cost of Breach Calculator

Design Manual

By

Name: Sarah De Vries

Student ID: C00231717

Project Supervisor: Paul Barry

Date: 11th December 2020

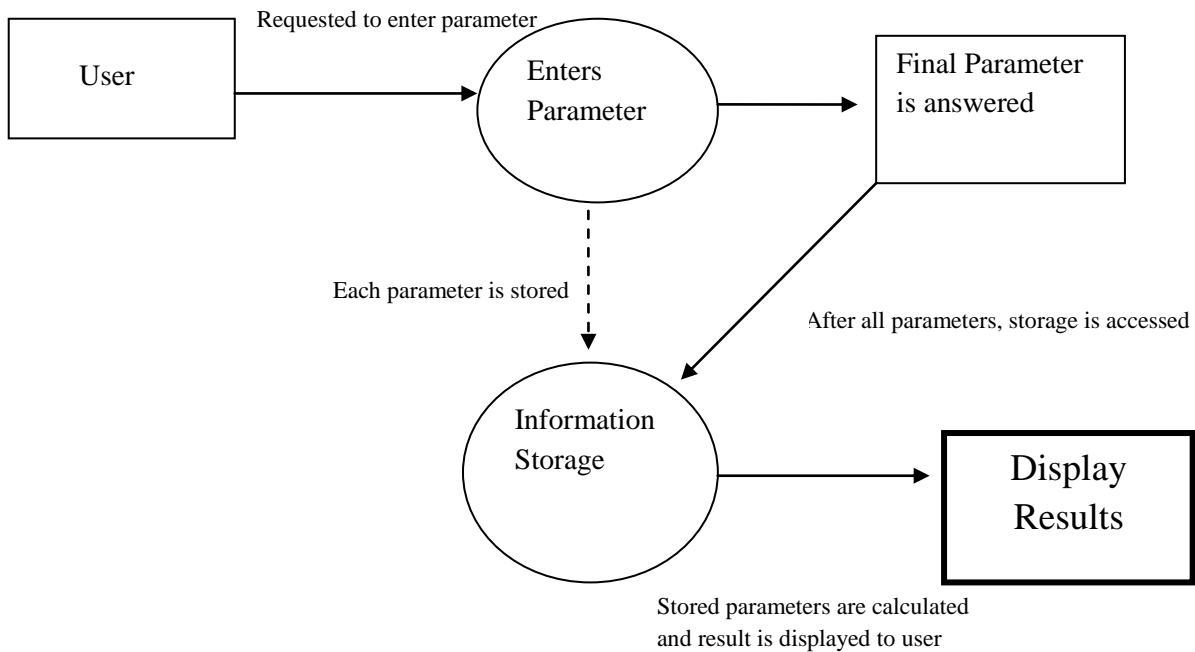
Table of Contents

Introduction.....	2
Diagram.....	3
Process	3

Introduction

This is the document for the Design Manual where the planned design elements of the Vulnerability Cost of Breach Calculator will be discussed. The manual will take concepts from both the research manual and the Functional Specification to give a detailed explanation of the operation of the calculating tool. The code I will be using for this calculating tool is C#.

Diagram



Process

1. The user will access the application calculation tool
2. The user will be prompted to select the type of breach that they want to calculate for
3. The tool will ask the user the type of file records they store whether its healthcare, credit card payment or identity records
4. There will be certain data breach specific questions for each type. Depending on the breach selected, certain questions will be available

What types of records are stored? (PHI, PCI, PII)

PHI

How many records were compromised?

3000

What is the organisation's annual revenue?

1,500,000

5. After the user enters each requested parameter, the parameter will be put into a programmed storage section
6. When all the parameters are stored, they will be calculated according to resources on calculating a data breach.
7. The overall result, in the form of the potential cost of the data breach to a company, will be displayed to the user.